



信义玻璃 | 引领绿色新生活
LEADING A GREEN NEW LIFE

INDONESIA INVESTMENT PLAN

XINYI New Energy Industrial Park (XYNEIP)

Oct, 2022



CONTENT

PART 1 **XINYI GROUP PROFILE**

PART 2 **XINYI INVESTMENT PLAN**

PART 3 **NEXT STEP**



PART 1

XINYI GROUP PROFILE

4 LISTED COMPANIES IN HONG KONG



XINYI GLASS
(00868.HK)



XINYI SOLAR
(00968.HK)



XINYI ENERGY
(03868.HK)



XINYI ELECTRIC STORAGE
(08328.HK)



HK based XINYI group is NOT subject to overseas investment and capital permits from government

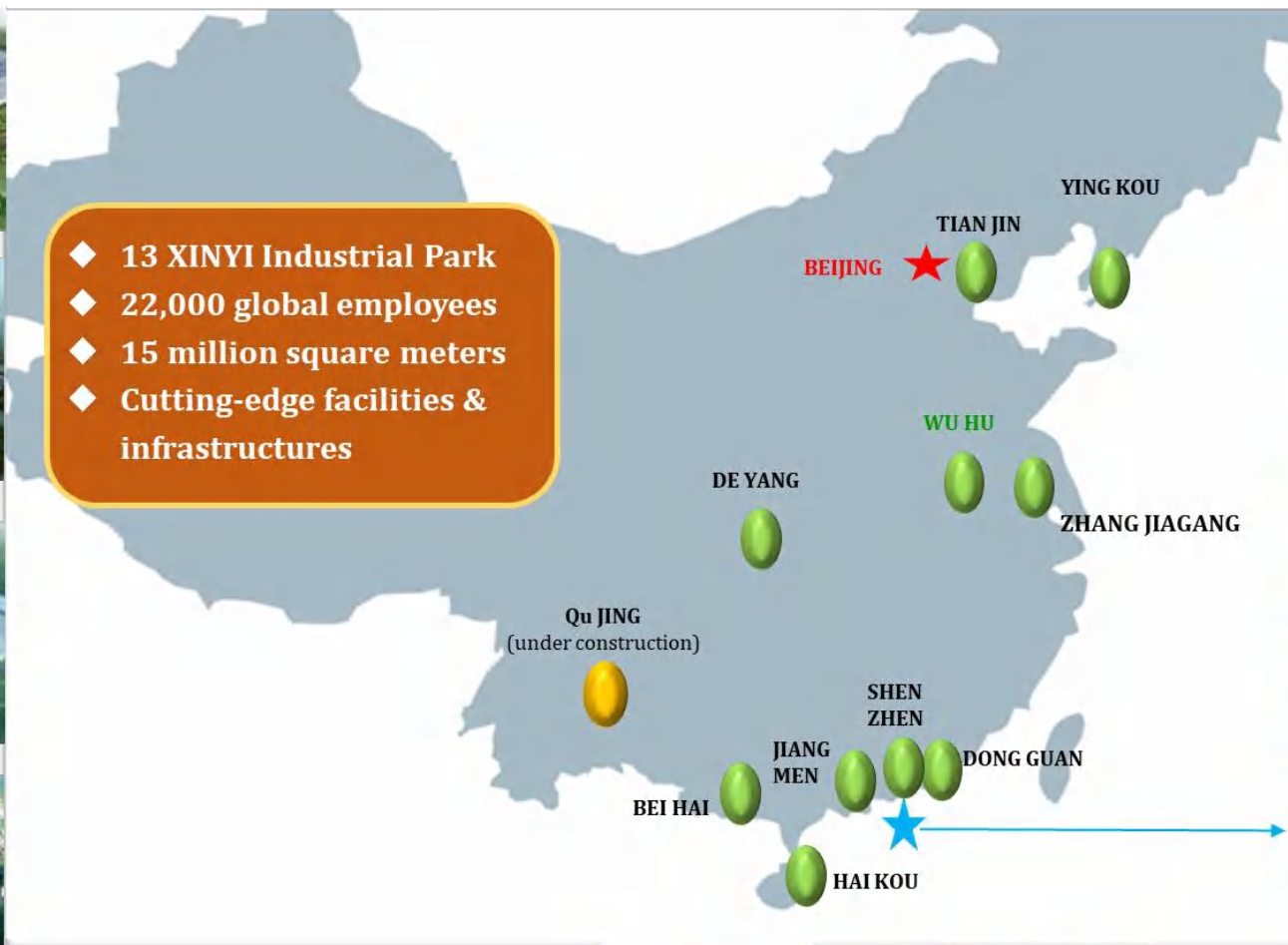




GROUP PROFILE



- ◆ 13 XINYI Industrial Park
- ◆ 22,000 global employees
- ◆ 15 million square meters
- ◆ Cutting-edge facilities & infrastructures

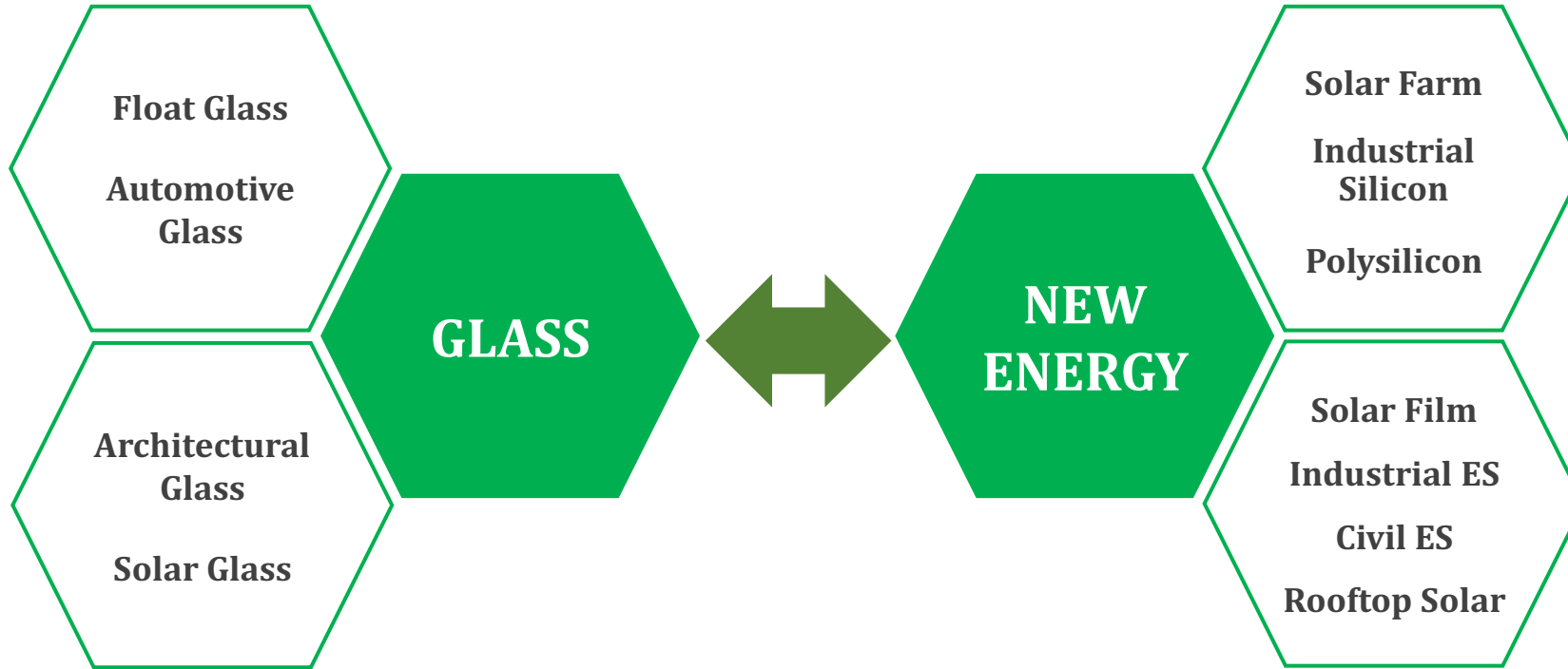
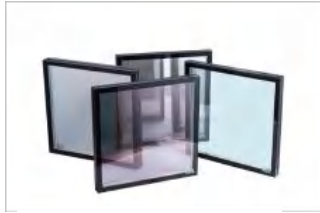




GROUP BUSINESS SEGMENTS



XINYI -- the world leader in GLASS manufacturer and NEW ENERGY



Total assets around 15.3 Billion USD | **Total market value around 30 Billion USD**



XINYI GLASS (XYG)-- A Leading Player in Global Glass Industry

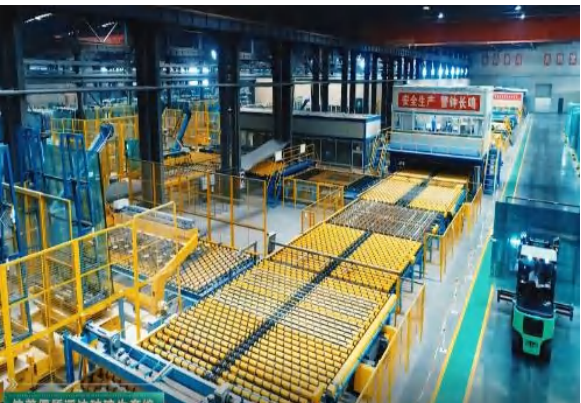


NO.1 In Float glass production in the world (12% Market share)

NO.1 In Automotive glass after market in the world (27% Market share)

NO.1 In Architectural glass in China (100 million m²/Y)

NEW 700 million USD to build PT XGI glass production in Gresik, Indonesia





XINYI SOLAR (XYS)-- A Leading Player in Global Solar Industry



NO.1

In Solar glass production in the world (1 billion m²/Y = 130 GW)

NO.1

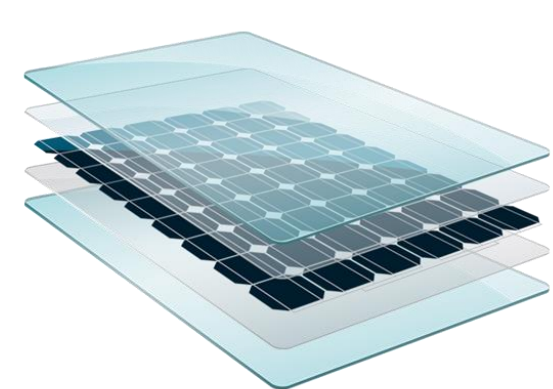
Foreign company to build Solar Farms in Mainland China (4 GW)

ALL

Solar module & panel producers in the world are YYS customer

NEW

Invest 2.5 billion USD in Polysilicon production (JV with XYG)

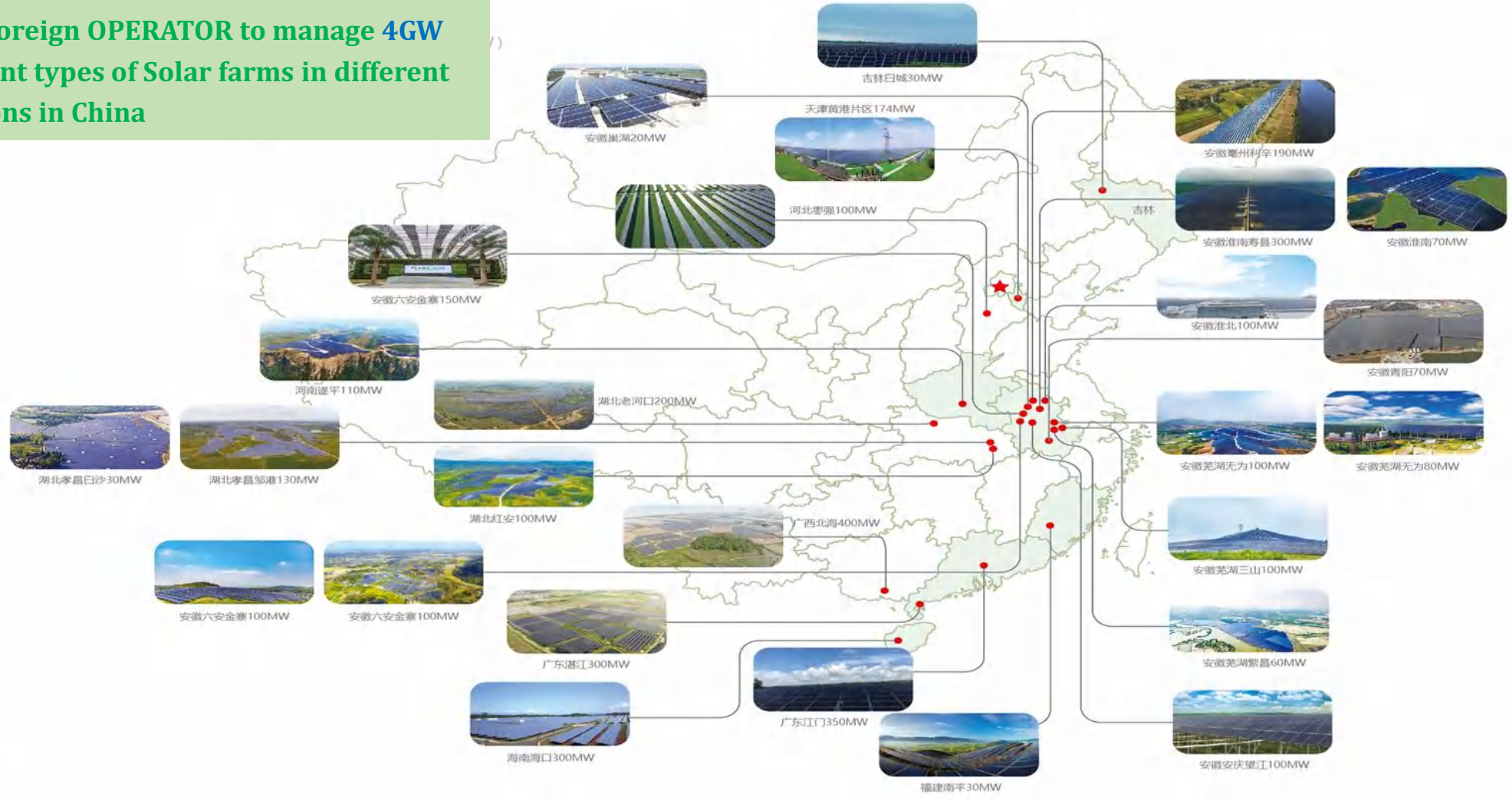




XINYI ENERGY (XYE)-- A Leading Solar Farm OPERATOR in China



NO.1 Foreign OPERATOR to manage 4GW different types of Solar farms in different locations in China





XINYI ELECTRIC STORAGE (XES)-- A Leading manufacturer in ES

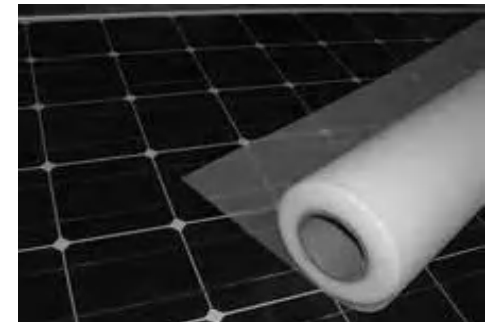


lithium battery (Industrial & Civil)

Electric & Solar storage (Industrial & Civil)

EVA (ethylene vinyl acetate) **Solar Film** (Module lamination) **production** (200,000 ton/Y)

Rooftop Solar construction & Operate (Industrial & Civil)

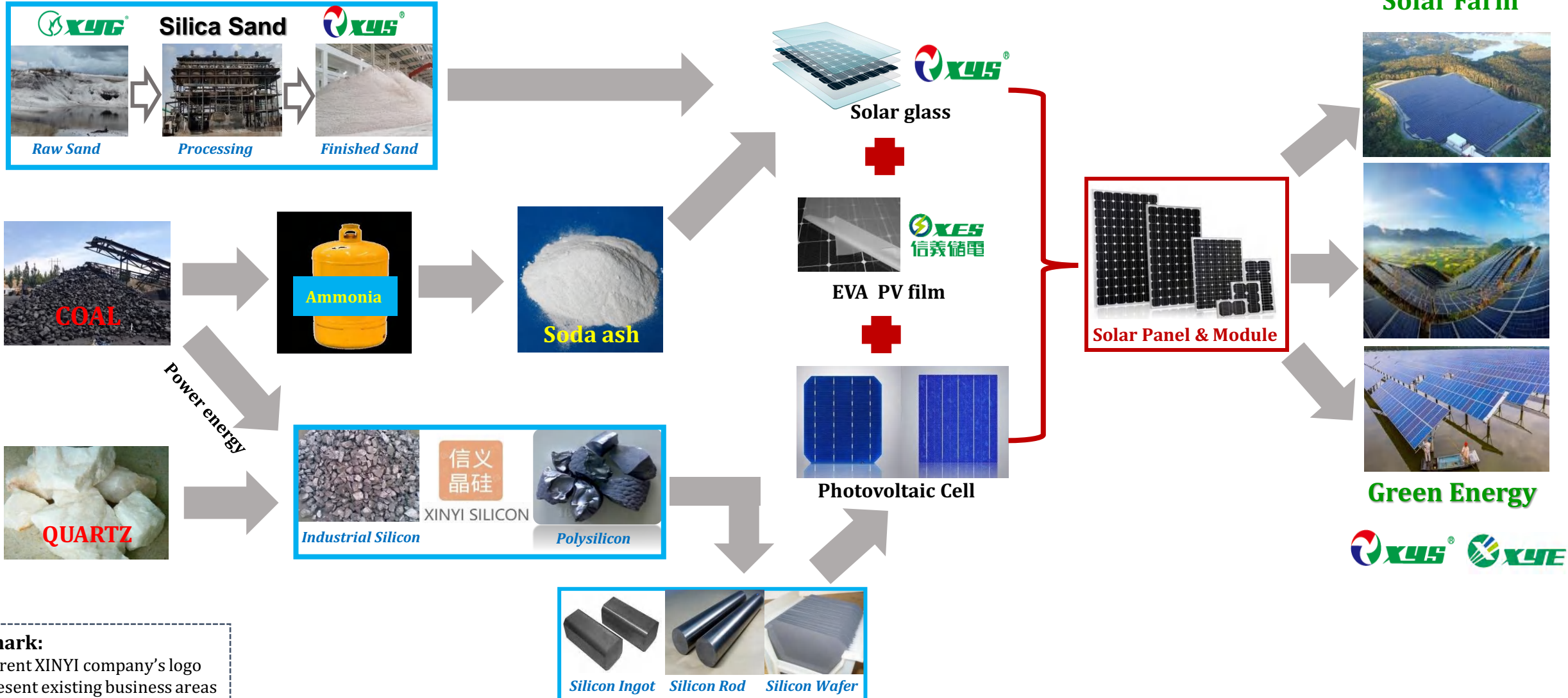




PART 2

XINYI INVESTMENT PLAN

XINYI New Energy Industrial Chain



Remark:
Different XINYI company's logo represent existing business areas of each listed company in XINYI

XINYI New Energy Industrial Park (XYNEIP)

XYNEIP

FACILITY & INFRA.



Self-supporting Power Plant



Employee residential



Self-built Pier/berth



Sewage Treatment



Raw Material stock warehouse



Water Plant

PRODUCTION

信义晶硅
XINYI SILICON

Industrial Silicon Polysilicon

XYG
XYS
SILICA SAND
Processing

XYG
XYS
SODA ASH Manufacture

Solar Cell

XYS
SOLAR GLASS

Solar Module

XYS 信义储能
EVA Solar Film

XINYI New Energy Industrial Park (XYNEIP)

High Level Project PLAN

1. **Production:** Soda ash, solar PV glass, polysilicon, silica sand processing, solar related products and stockpile yard
2. **Infrastructure:** Self-Built infra and facilities including *Coal power plant, deep-water berth*, etc
3. **Land:** Planned total land around **1000 Hectares**
4. **Investment:** Total investment around **6.3 billion USD** (phase by phase)
5. **Electricity Power:** 2GW self supporting power plant; Annual electricity: 17.2 billion Kw.h
6. **Coal consumption:** For energy power: 5.2 million tons/year ; for raw material: 1.6 million tons/year



Soda ash

- 2 million ton/year
(Combined process)
- **Raw Material:** Coal, Salt
- **Land:** 200 Ha



Solar PV Glass

- 8 furnaces (32 lines)
- **Raw Material:**
soda ash, silica sand, etc
- **Land:** 150 Ha



Polysilicon

- 200,000 ton/year
- **Raw Material:**
Quartz, Coal
- **Land:** 250 Ha



Others

- Silica sand processing
- Stockpile yard
- Power Plant, berth....
- Other production



PART 3

NEXT STEP

Engagement Progress (XYNEIP)

- Supported by BKPM and Governor, KALTIM Investment board has taken XINYI local staff to visit some potential lands in KALTIM.
- **XINYI summarized some high-level criterial for investment execution:**
 1. 800-1000 Hectares land;
 2. 1-2 hours drives from closest airport of main city;
 3. The land is Industrial area or can be changed into Industrial area.
 4. Self-supporting berths – 50000 DWT vessel
 5. Self-supporting COAL power plant should get official approval;
- **Until now, among all visited lands, the location in picture looks closer to aforementioned criterial and need further investigation:**
 - XINYI will revisit the location and conduct high level meeting with land owner;
 - XINYI expect to get clear answers for following questions;
- Continue to search more land options by aforementioned criteria;

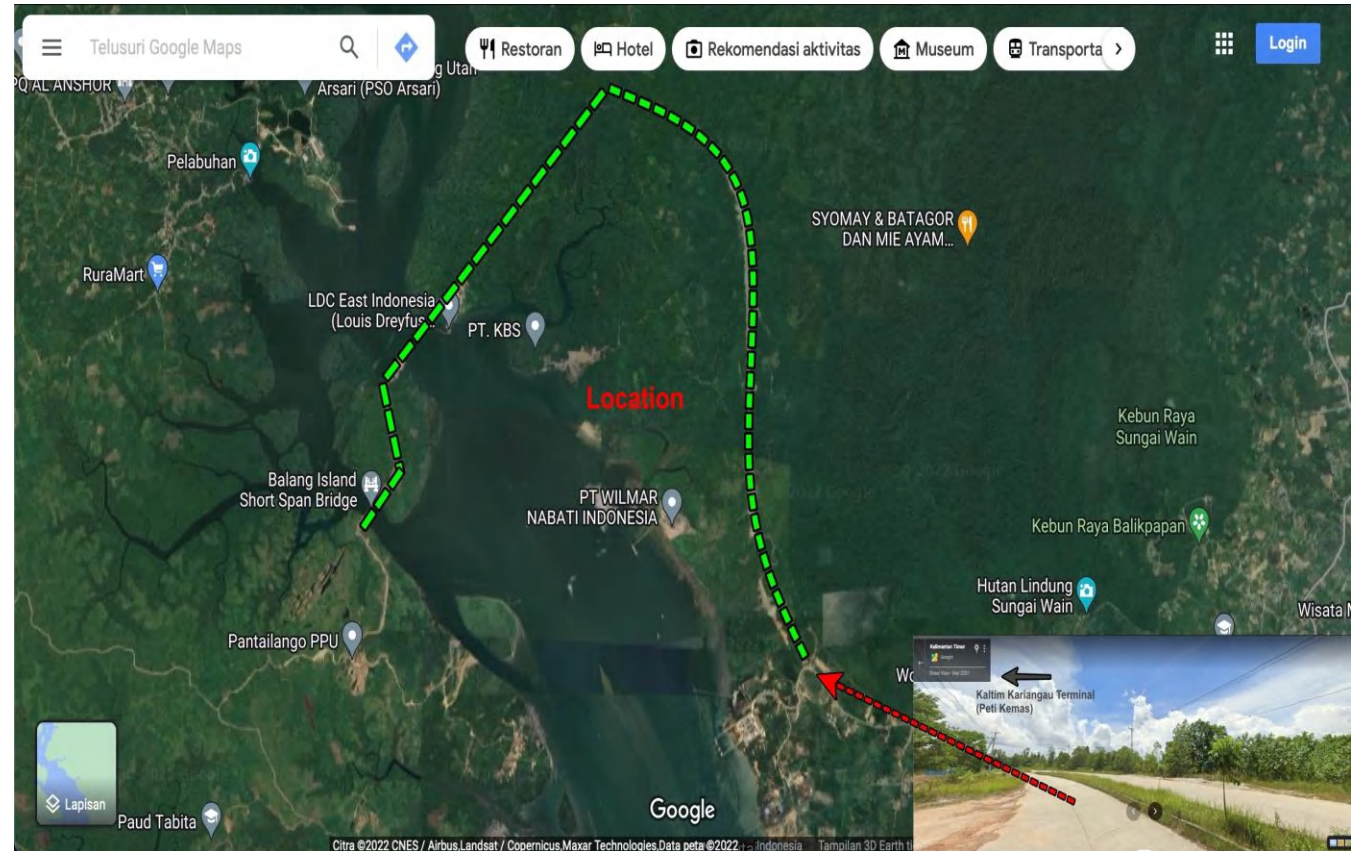


Questions need to be resolved for XYNEIP

NO.1 Road

By plan, KALTIM government will build a new road (green line) to connect the New Capital with both sides of the strait. We expect to know:

1. Road construction grade:
The road will be high way level or normal cement road?
2. If the road is high way, can have a tollgate around location to provide quick access for XINYI, KBS AND WILMAR?
3. When the road connection will be ready and has construction plan approved by Central and Provincial authorities?



Questions need to be resolved for XYNEIP

NO.2 Berth

Self-built berth will be constructed by the cutting-edge facilities to strictly comply with relevant rules and regulations.

We expect to know:

1. What is the process to get official approval for self-built berth construction and operation?
2. Which authority will take lead for coordination?
3. During berth construction, if sea water depth cannot meet vessel parking criteria, can we legally dig out sea sand to fill in swamp land inside XYNEIP area ?
4. During construction, how to deal with mangrove trees (Pohon Bakau) on land inside XYNEIP ?



Questions need to be resolved for XYNEIP

NO.3 Self-supporting coal power plant

1. Reasons for using COAL:

- Manufactures in XYNEIP need huge amount of electricity and energy;
- Main production are uninterrupted processes in electricity and energy supply;
- Unable to secure enough supply in electricity and natural gas from local public utilities;
- Rich reserves of COAL in Kalimantan and short transportation;

2. XINYI commitments:

- Self-supporting power plant will **ONLY** supply electricity to productions in XYNEIP;
- Self-support power plant will install cutting-edge facilities to strictly comply with relevant Indonesian rules and regulations.

3. Questions:

- What is the process to get firm official decision for COAL power plant?
- Which authority will take lead for coordination? (BKPM or provincial government?)
- How long to get this decision clear? (approve, reject or conditional approve)



This decision is the most critical factor for XYNEIP project execution !



信義玻璃

引領綠色新生活

LEADING A GREEN NEW LIFE

TERIMA KASIH